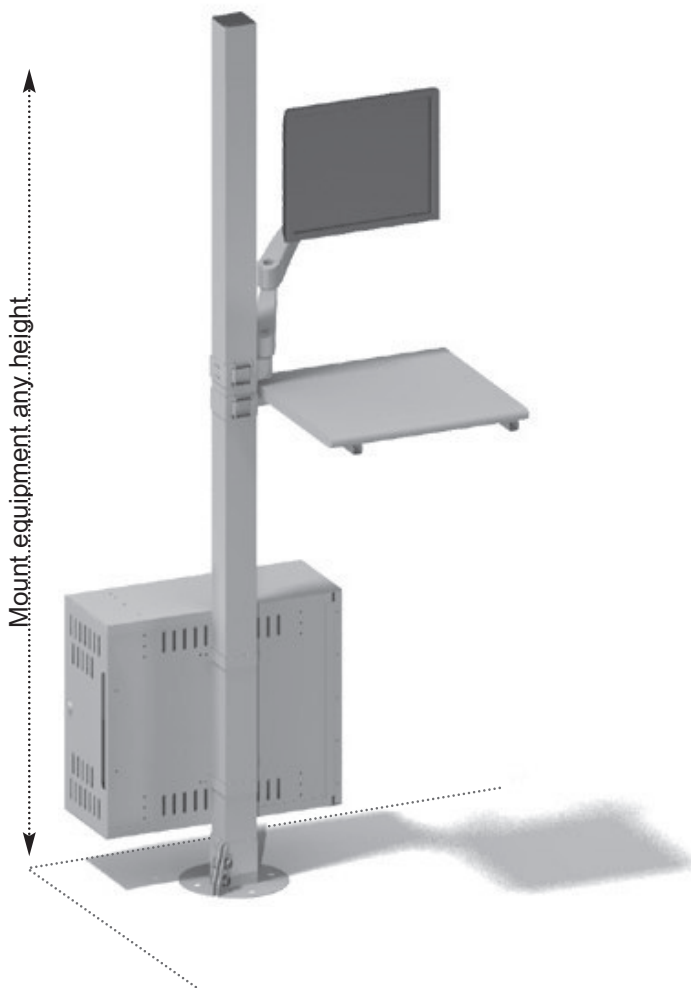


SENTRY POST WORKCENTER INTRODUCTION

The Morrell Industries Sentry Post Workcenter organizes computer equipment into a durable and compact footprint. The 3" x 3" Fixed Mounting Post configuration easily holds a complete workstation. With the convenience of a fixed or fold-away worksurface, and our vented, lockable CPU cabinets, create a multipurpose workcenter that accommodates your tools, supplies, computer equipment, and your work force.

Sentry Post WorkCenter Capabilities



Basic Specifications

Base Unit includes:

- 3x3 Sentry Post (80"H and 96"H Standard)
Custom Heights available in 1" increments
- Welded Base (incl Hardware)

Sentry Post WorkCenter Options:

- Worksurface, 20"W x 18"D laminate
- Fixed or Fold-away Worksurface Underbracing
- Flat Panel Monitor Mounting
- CPU Cabinet, 20" wide, vented, lockable, holds CPUs up to 18-3/8"W (467 mm), 21"D (533 mm) and 8"H (203 mm)
- CPU Holder (6 1/4"- 11" extended variable width)
- Packaging Stand, Mounting Bar (12", 24", 30"L)

Morrell Industries Flat Panel Mounting Options:

- Single Flat Panel Monitor Mounting,
- Dual Flat Panel Monitor Mounting,
- Extenders

Keyboard Holder Options:

- Keyboard Tray (with or without Mouse Tray)
- Wire Keyboard Holders
- Mouse Pad and Mouse Pouch

Highlights

- *Compact footprint takes up minimal floor space*
- *Custom Sentry Post Heights (available in 1" increments, 80"H & 96"H Standard)*
- *Multiple configuration options, modular components*
- *Durable, heavy-duty steel construction*
- *Fixed and Fold-away laminated worksurface options*
- *Flat Panel Monitor Arms that easily extend and adjust*
- *Cable management that conceals and routes cables*
- *Lockable, vented CPU Cabinets*
- *Tool Mounting Brackets*
- *Industry-leading warranty*

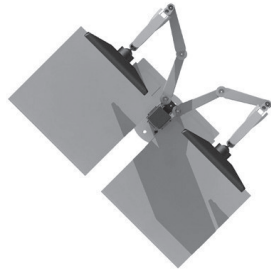
PRECONFIGURED SENTRY POST WORKCENTERS

Order these complete solutions with one part number. Add components according to your needs.



MIPST-27010-GY

- (1) MIPST-20280-GY
- (1) MIFPA-45802-GY
- (3) MIPST-60332-GY
- (2) MILTS-55035-GY
- (2) MIPST-65086-GY
- (2) MIPST-80063-XX



MIPST-27020-GY

- (1) MIPST-20296-GY
- (1) MIFPA-45500-GY
- (1) MIPST-60332-GY
- (1) MILTS-55035-GY
- (1) MIPST-65086-GY
- (2) MIPST-60330-GY
- (1) MIPST-80062-GY



MIPST-27030-GY

- (1) MIPST-20296-GY
- (2) MIFPA-45500-GY
- (5) MIPST-60332-GY
- (2) MILTS-55035-GY
- (2) MIPST-65048-GY
- (2) MIPST-80063-XX



MIPST-27040-GY

- (1) MIPST-20280-GY
- (1) MIFPA-45501-GY
- (1) MILTS-55035-GY
- (1) MIPST-65048-GY
- (1) MIPST-60330-GY
- (1) MIPST-80062-GY
- (1) MIPST-65086-GY



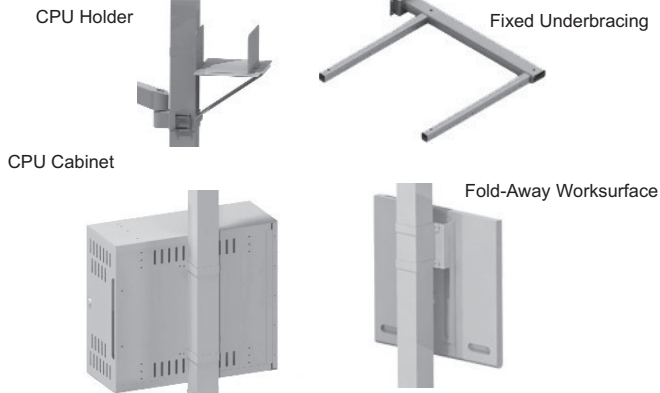
HOW TO CONFIGURE YOUR SENTRY POST WORKCENTER

A. Select a Post Height

48"H 80"H & 96"H 3 x 3 Posts are Standard
Custom Heights Available in 1" Increments



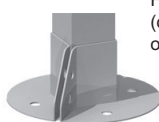
E. Select Peripherals



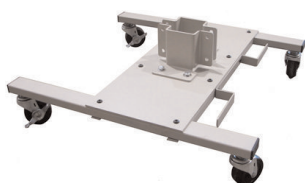
B. Choose Base: Fixed Mounted Base Vertical Mounting Bracket, or Mobile Platform



Mounts equipment to a vertical surface (such as your tools)

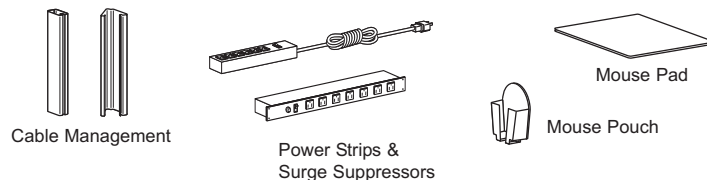


Fixed Mounted Base (cement hardware ordered separately)



Mobile Sentry Platform and Base: incl Casters, Cable Winding Bracket and Hardware Kit

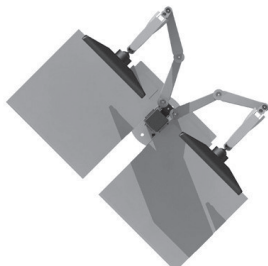
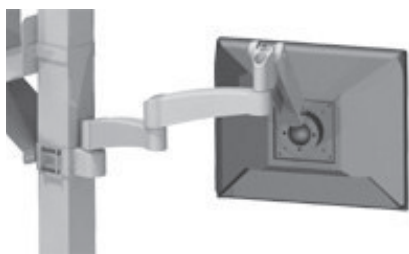
F. Add Accessories as needed



Note: Standard Color is Grey (-GY). Available in Black (-BK) Paint Upcharge varies depending on quantity. Custom colors available upon request.

C. Choose Monitor Mounting Options

Choose single or multiple mounts. Dual Post Mounting Brackets fix arms and peripherals.



FIXED MOUNTING POST

Sentry Post



The Sentry Post is the backbone that provides one standard interface to customize your workcenter. The post can be bolted to the floor or mounted directly to a vertical surface (such as a bench or a machine tool). Choose the length that will accommodate your height requirements and the size and number of components you will mount.

Part Number	Description	MSRP(\$)	Wt
MIPST-20248-GY	3" x 3" x 48"H Sentry Post, 14 gauge steel, incl Base & Hardware Kit	270	26
MIPST-20280-GY	3" x 3" x 80"H Sentry Post, 14 gauge steel, incl Base & Hardware Kit	315	39
MIPST-20296-GY	3" x 3" x 96"H Sentry Post, 14 gauge steel, incl Base & Hardware Kit	410	47
MIPST-20048-GY	3" x 3" x 48"H Sentry Post, 14 gauge steel Base not included	135	19
MIPST-20080-GY	3" x 3" x 80"H Sentry Post, 14 gauge steel Base not included	180	32
MIPST-20096-GY	3" x 3" x 96"H Sentry Post, 14 gauge steel Base not included	215	38

Note: Custom Sentry Post Heights (available in 1" increments)
 Note: Standard Color is Grey (-GY). Available in Black (-BK) Paint Upcharge varies on quantity.

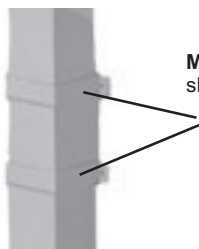
Sentry Post Mounted Base & Mounting Brackets



MIPST-24022-GY
shown with Sentry Post

The Sentry Post Fixed Mounting Base anchors the post to the floor.

Part Number	Description	MSRP(\$)	Wt
MIPST-24020-GY	Sentry Base, 7 gauge steel	135	7
MIPST-24022-GY	Heavy Duty Sentry Base (use with Posts over 80"H)	195	9
MIPST-90412-XX	Concrete Anchor Kit for Base	14	2



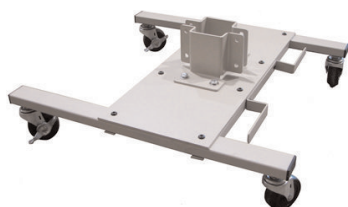
MIPST-60330-GY
shown with Sentry Post

Brackets for Vertical Surface Mounting

Part Number	Description	MSRP(\$)	Wt
MIPST-60330-GY	3" x 3" Vertical Mounting U-Bracket, pair	48	4

Mobile Sentry Platform and Base

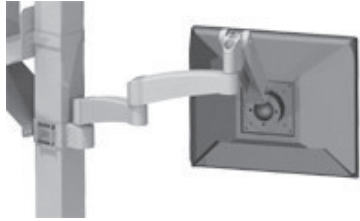
Part Number	Description	MSRP(\$)	Wt
MIPST-10024-GY	Mobile Sentry Platform and Base, incl Casters, Cable Winding Bracket and Hardware Kit 24"W x 26"D (Sentry Post ordered Separately)	460	



MIPST-10024-GY
Mobile Platform and Base

MONITOR MOUNTS

Flat Panel Mounts



MIFPA-45502-GY



Top view
MIFPA-45502-GY

Morrell Industries' flat panel mounts offer height adjustment to accommodate multiple users.

Part Number	Description	MSRP(\$)	Wt
MIFPA-45500-XX	Single Flat Panel Vertical Mount,	275	7
MIFPA-45501-XX	Single Flat Panel Vertical Mount, one extender	300	8
MIFPA-45502-XX	Single Flat Panel Vertical Mount, two extenders	325	10
MIFPA-45203-GY	Direct Mount, Swivel Pivot	115	2

Arm Mount Bracket

MIPST-60332-GY*	3" x 3" Dual Mount Bracket	78	5
-----------------	----------------------------	----	---

* Vertical Mount Flat Panel Arms require the MIPST-60332-XX to mount to Sentry Post.
Note: Available Color Options Grey, Black (-GY, -BK)

Morrell Industries' Dual Flat Panel Arms.

Part Number	Description	MSRP(\$)	Wt
MIFPA-45801-XX	Dual Flat Panel Vertical Mount Arm w/ extenders (2 ext)	575	
MIFPA-45802-XX	Dual Flat Panel Vertical Mount Arm w/ extenders (4 ext)	625	

Note: Available Color Options Grey, Black (-GY, -BK)

CPU Holder



Mount Vertical CPU Holders can be mounted at any height along the Sentry Post.

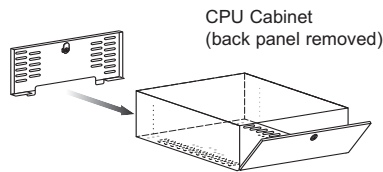
Part Number	Description	MSRP(\$)	Wt
MIPST-80063-GY	11"W x 11.25"H CPU Holder (6"-10.5" ID, adjustable)	155	12

Note: To mount the CPU Holder to Sentry Post, Bracket is required (see Page 49).

CPU Cabinet



CPU Cabinet (bottom view with fixed underbracing; MIPST-65086-GY)



The CPU Cabinet provides a secure enclosure for equipment up to 18-3/8" wide. It features a lockable, hinged front panel and a lockable, removable back panel. Bottom and rear are vented. Includes cable through-holes.

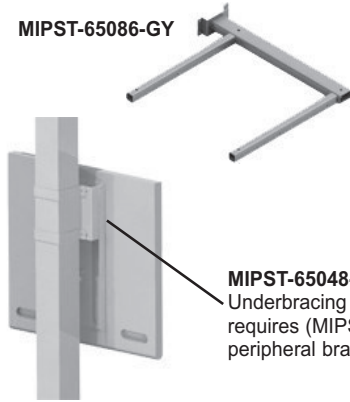
Part Number	Description	MSRP(\$)	Wt
MIPST-80062-GY	20"-Wide CPU Cabinet	210	34

Note: Mount your equipment Horizontally with Fixed Underbracing (MIPST-65086-GY).

FOLD-AWAY & FIXED UNDERBRACING

Fold-Away & Fixed Underbracing

MIPST-65086-GY



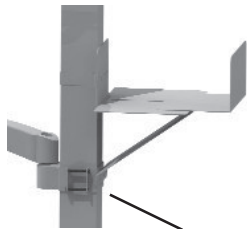
MIPST-65048-GY Fold-Away Underbracing w/ Peripheral Table, requires (MIPST-60330-GY) peripheral brackets

Morrell Industries' Peripheral Worksurface provides a solid, laminated surface for holding equipment. It can be configured with either Fixed or Fold-Underbracing (ordered separately).

Part Number	Description	MSRP(\$)	Wt
MILTS-55035-GY	Peripheral Table, Laminated	125	13
MIPST-65048-GY	Fold-Away Underbracing, for Peripheral Table	170	7
MIPST-65086-GY	Fixed Underbracing, for Peripheral Table	260	7

Note: To mount the Fold-Away Underbracing to Post, Bracket is required (see below).
 Note: Fixed Underbracing does not require extra bracket. Additionally the fixed underbracing provides a Horizontal Mounting option for the CPU Cabinet (MIMWC-80062-XX) and other equipment.

Peripheral Mounting Brackets



MIPST-60332-GY shown mounting a Flat Panel Arm and CPU Holder (MIPST-80063-GY)

Peripheral Mounting Brackets are required to mount components to the Sentry Post.

Part Number	Description	MSRP(\$)	Wt
MIPST-60330-GY	3" x 3" Vertical Mounting U-Bracket, pair	48	2
MIPST-60332-GY*	3" x 3" Dual Mount Bracket	78	5

* Vertical Mount Flat Panel Arms require the MIPST-60332-XX to mount to Sentry Post.
 Note: Use the MIPST-60330-GY to mount the Sentry Post without the Base to vertical surfaces.
 Note: The MIPST-60332-GY mounts peripherals on opposite sides of Sentry Post increasing available vertical space.



MIPST-60330-GY shown with CPU Cabinet (MIPST-80062-GY)

Mounting Bar



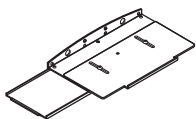
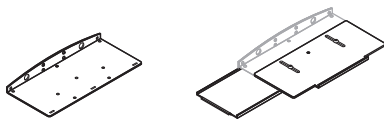
The Mounting Bar stores paper rolls and plastic wrap on your packaging station. Universal peripheral mounting brackets allow you to share space on the workstation and mount your equipment on the opposite side.

Part Number	Description	MSRP(\$)	Wt
MIPST-62012-GY	12"L Mounting Bar, incl thread plate	55	2
MIPST-62024-GY*	24"L Mounting Bar, incl thread plate	60	3
MIPST-62030-GY	30"L Mounting Bar, incl thread plate	65	4

Note: Use the MIPST-60332-GY to attach the Mounting Bar and peripherals on opposite sides of Sentry Post increasing available vertical space.

KEYBOARD MOUNTING SOLUTIONS

Keyboard/Mouse Trays and Accessories



MIMWC-77050-GY
Keyboard Tray w/ Mouse Tray & Wrist Rest Assembly

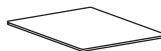
Keyboard/Mouse Trays & Accessories: Use with Keyboard Tray Holders (see above).

Part Number	Description	MSRP(\$)	Wt
MIMWC-77049-GY	Keyboard Tray	47	2
MIMWC-77050-GY	Keyboard Tray w/ Sliding Mouse Tray & Wrist Rest Holder	105	4
MIMWC-85024-GY*	Sliding Mouse Tray & Wrist Rest Holder	58	2
MIACC-85044-XX	Wrist Rest, gel teal blue; 18.5" x 3"	26	1
MIACC-85030-XX	Mouse Pad 7" x 8"	11	1
MIACC-99034-GY	Mouse Pouch	8	1

* MIMWC-85024-GY converts MIMWC-77049-GY into MIMWC-77050-GY.

Note: The Sliding Mouse Tray slides to either the right or the left, depending on user preference.

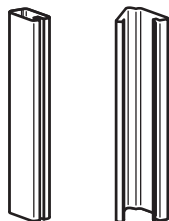
MIMWC-85030-XX,
Mouse Pad



MIMWC-99034-GY
Mouse Pouch



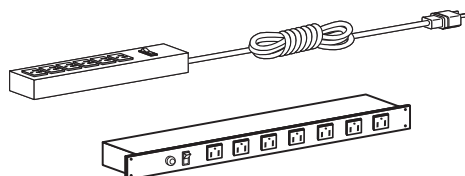
Cable Management



Cable Management Channels are composed of rigid, non-conductive plastic. Channels readily adhere to the Sentry Post. To use Channels, simply snap open the cover, then route cables and snap the cover closed.

Part Number	Description	MSRP(\$)	Wt
MIMWC-70006-GY	6" Cable Management Channel, one	6	1
MIMWC-70032-GY	32" Cable Management Channel, one	32	2
MIMWC-70036-GY	6" Cable Management Channel, set of 6	36	2

Power Strips & Surge Suppressors



Morrell Industries' Power Strips and Surge Suppressors attach directly to the Post. They feature sturdy aluminum housing and a 15-foot cord.

Part Number	Description	MSRP(\$)	Wt
MIPWR-83112-XX*	7-outlet 12"; 15 amp Surge Suppressor	78	6
MIPWR-83001-XX	16-outlet 48"; 15 amp Power Strip	87	6
MIPWR-83008-XX**	10-outlet 48"; 20 amp Power Strip	160	4
MIPWR-83125-XX	8-outlet 24"; 15 amp Power Strip	77	6

* Includes two data jacks and modem/fax surge protection

** Requires a 20 amp receptacle/outlet.